

EXPLORING THE DYSLEXIC MIND

AN IMMERSIVE EXPERIENCE
USING AUGMENTED REALITY



BY CHANGEINKK FOUNDATION



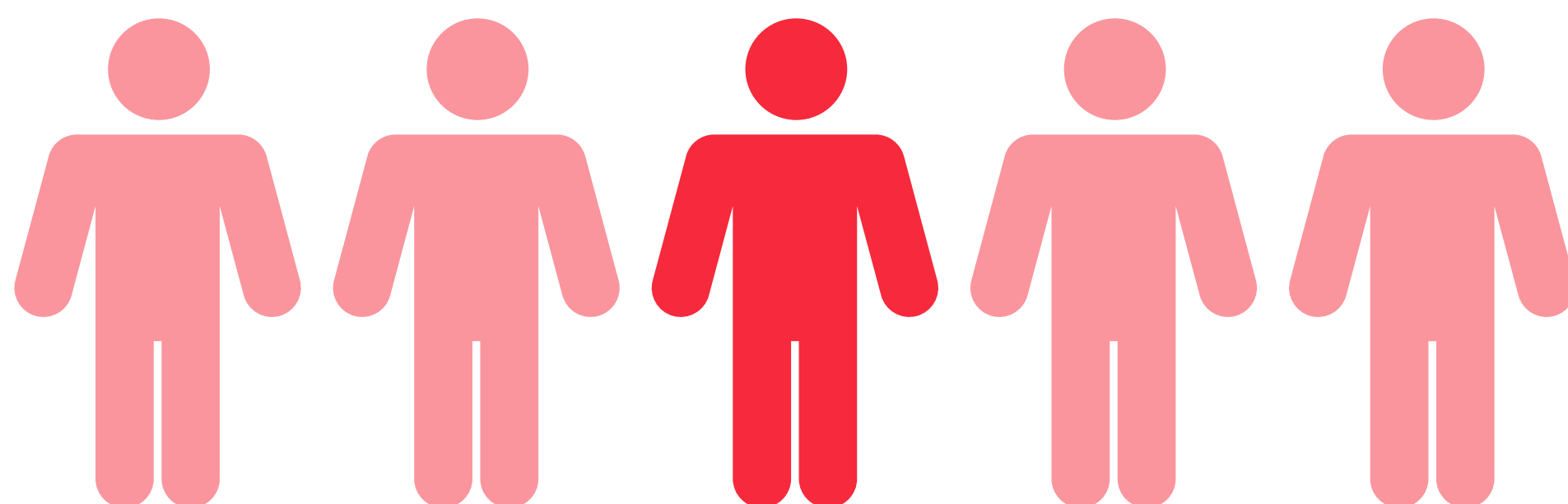
Welcome to an exciting journey into the brain of a learner with dyslexia!

Dyslexia is a Specific Learning Disability (SLD) that affects 1 in every 5 individuals, affecting how they read, write, and spell. Having dyslexia doesn't mean these people not smart (they have average or above average IQ); it just means they learn differently.

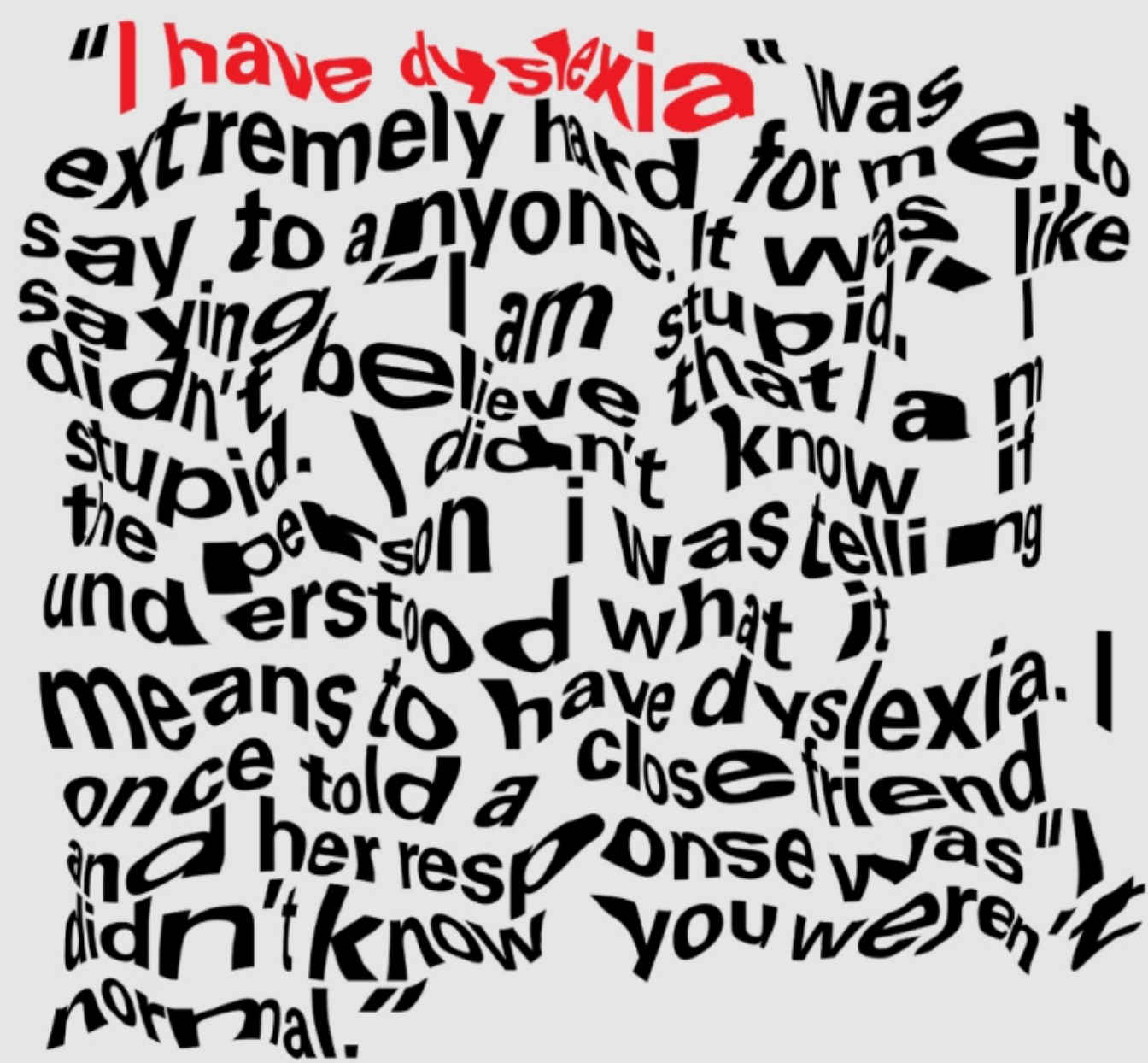
This booklet will help us experience how learners with dyslexia perceive the world. By scanning the images on each page using an AR scanner, you can explore the unique way in which their brain processes information, getting insight into their strengths and struggles.

We hope you enjoy the journey!

**1 OUT OF 5 INDIVIDUALS
HAVE A LEARNING DISABILITY**



**Dyslexia is also known
as a print disability.**



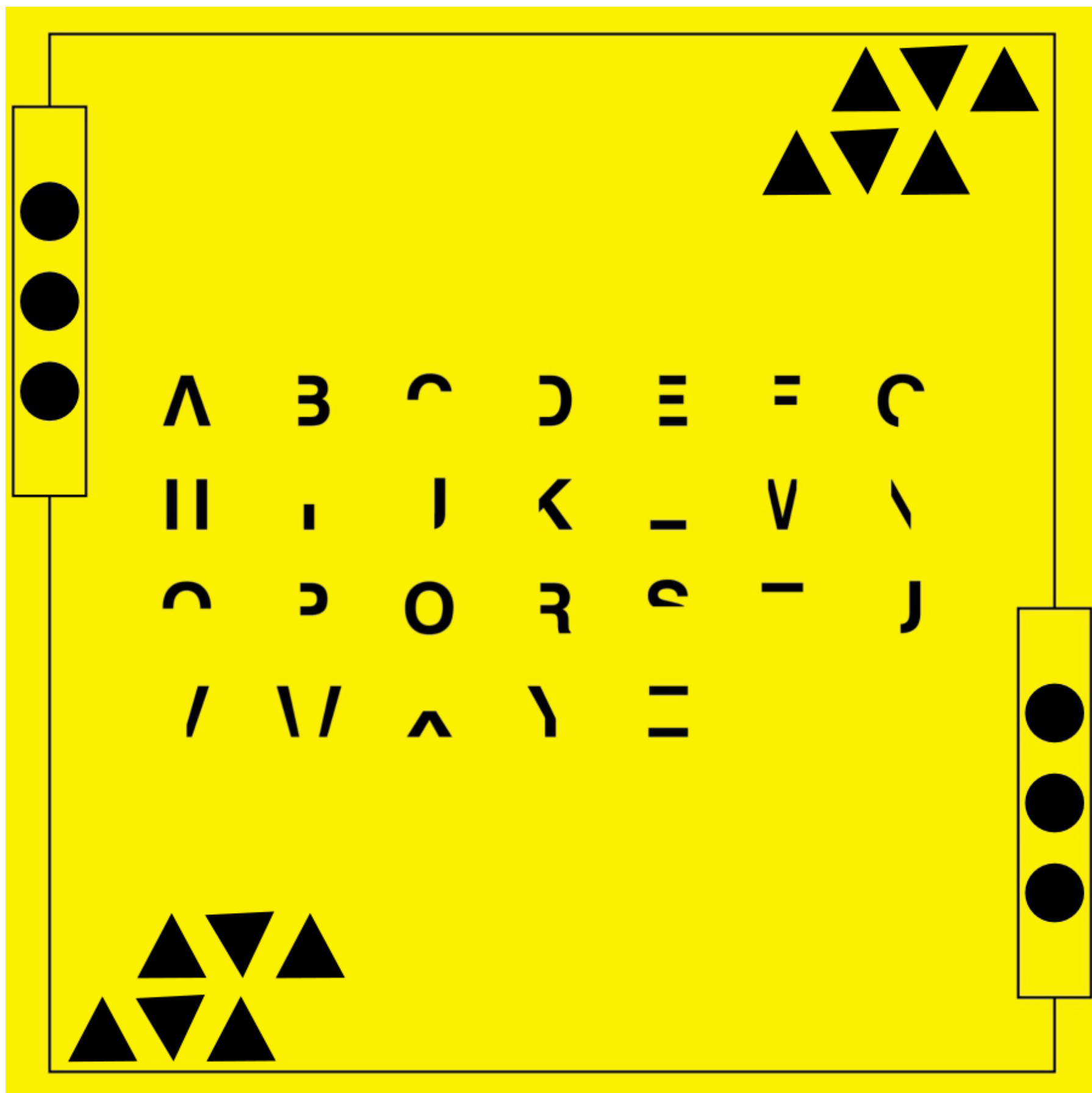
"I have **dyslexia**" was extremely hard for me to say to anyone. It was like saying "I am stupid." I didn't believe that I am stupid. I didn't know if the person I was telling understood what it means to have dyslexia. I once told a close friend and her response was "I didn't know you weren't normal."

Dyslexics often flip or mirror images.

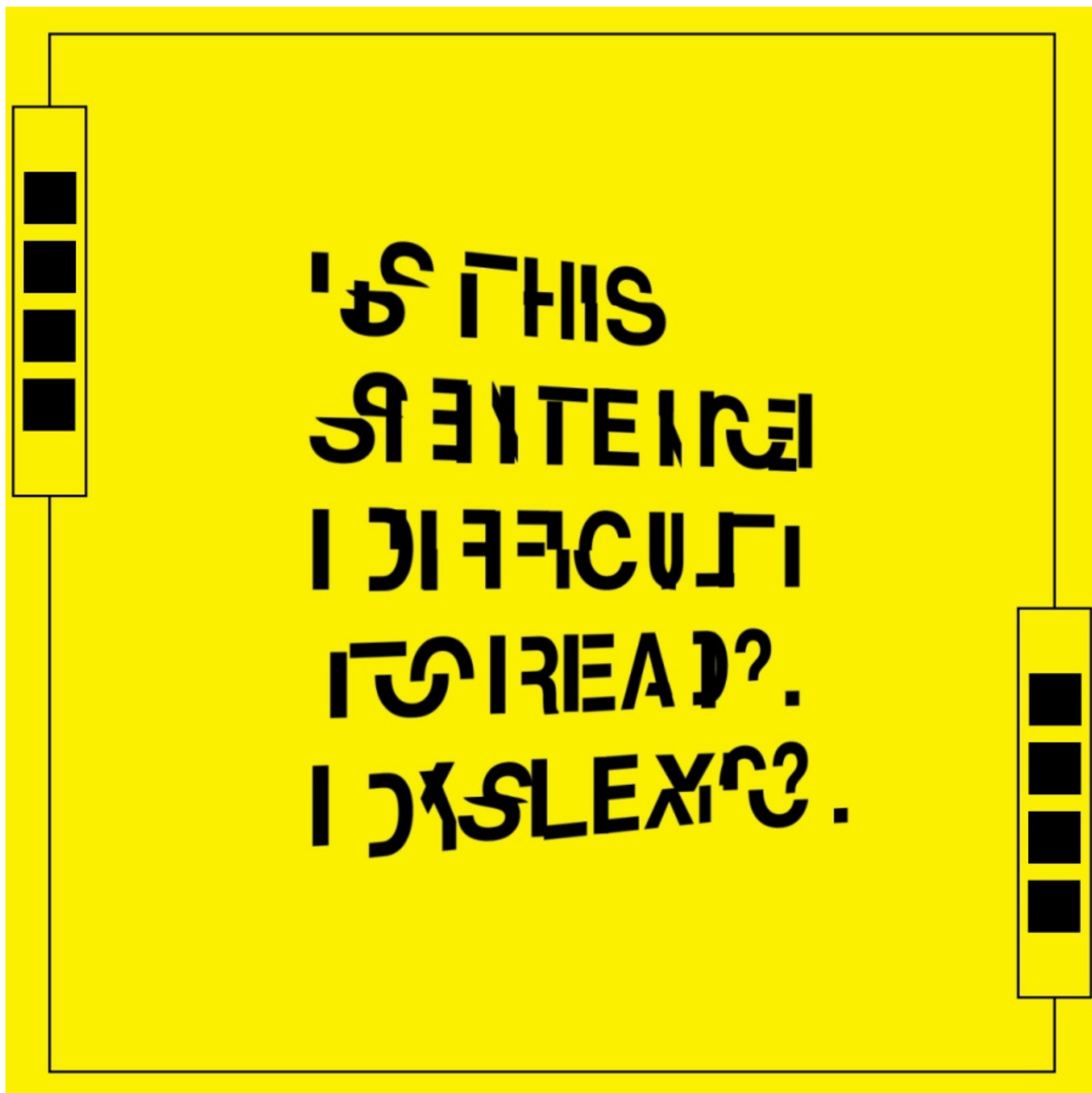


**Teh puick dromu
fox jnwqs over
the lany go6**

**They may see text as
incomplete images.**




**They may see text as
jumbled up or merged
together.**



**They may see double
or content in
duplicate.**

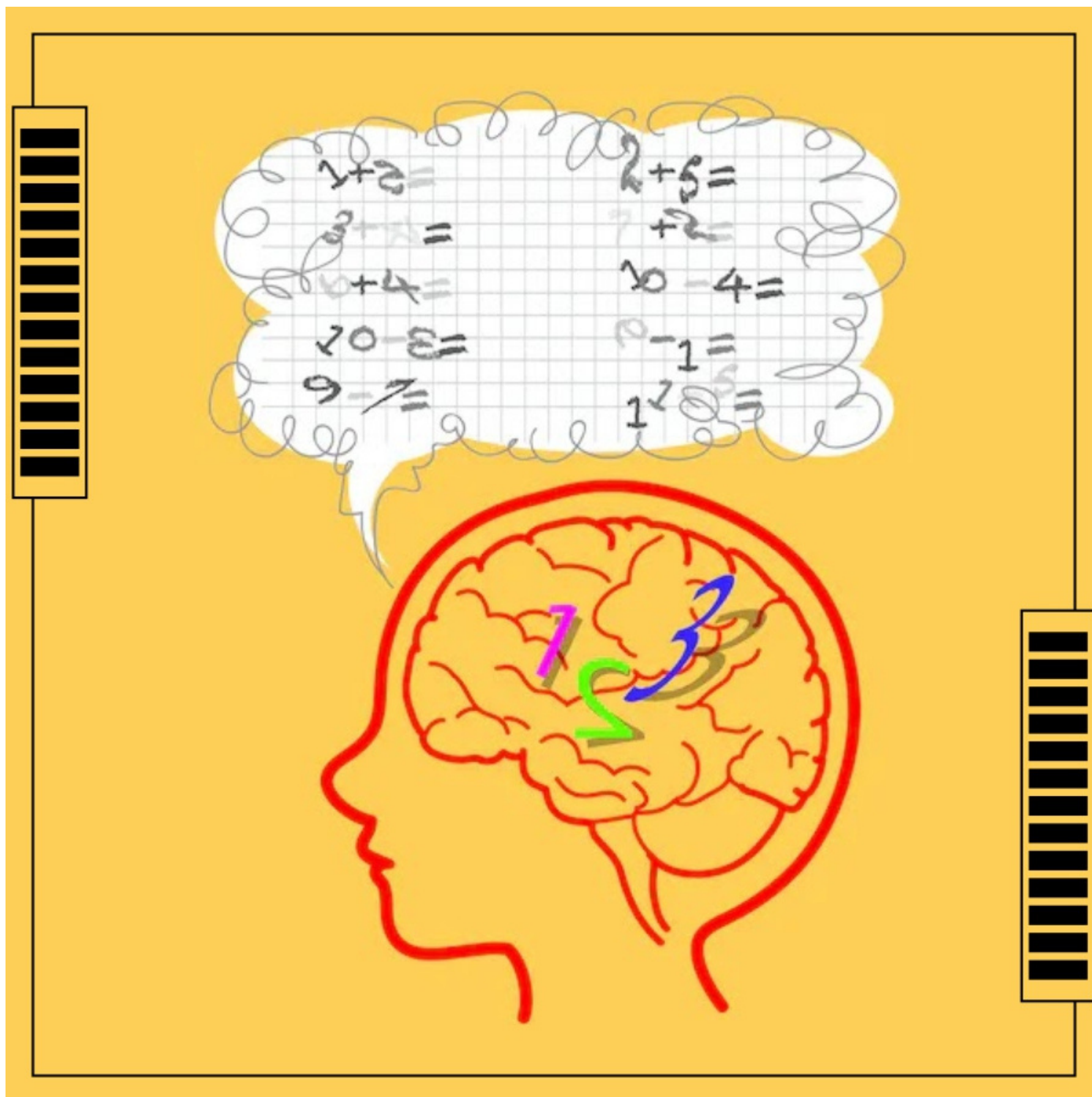
**How many
apples are there?**



★
★
★
★

★
★
★
★

Dyslexics are often great at solving math puzzles in their heads, but have difficulty in showcasing their thought process or solving problems in a step-by-step manner on paper.

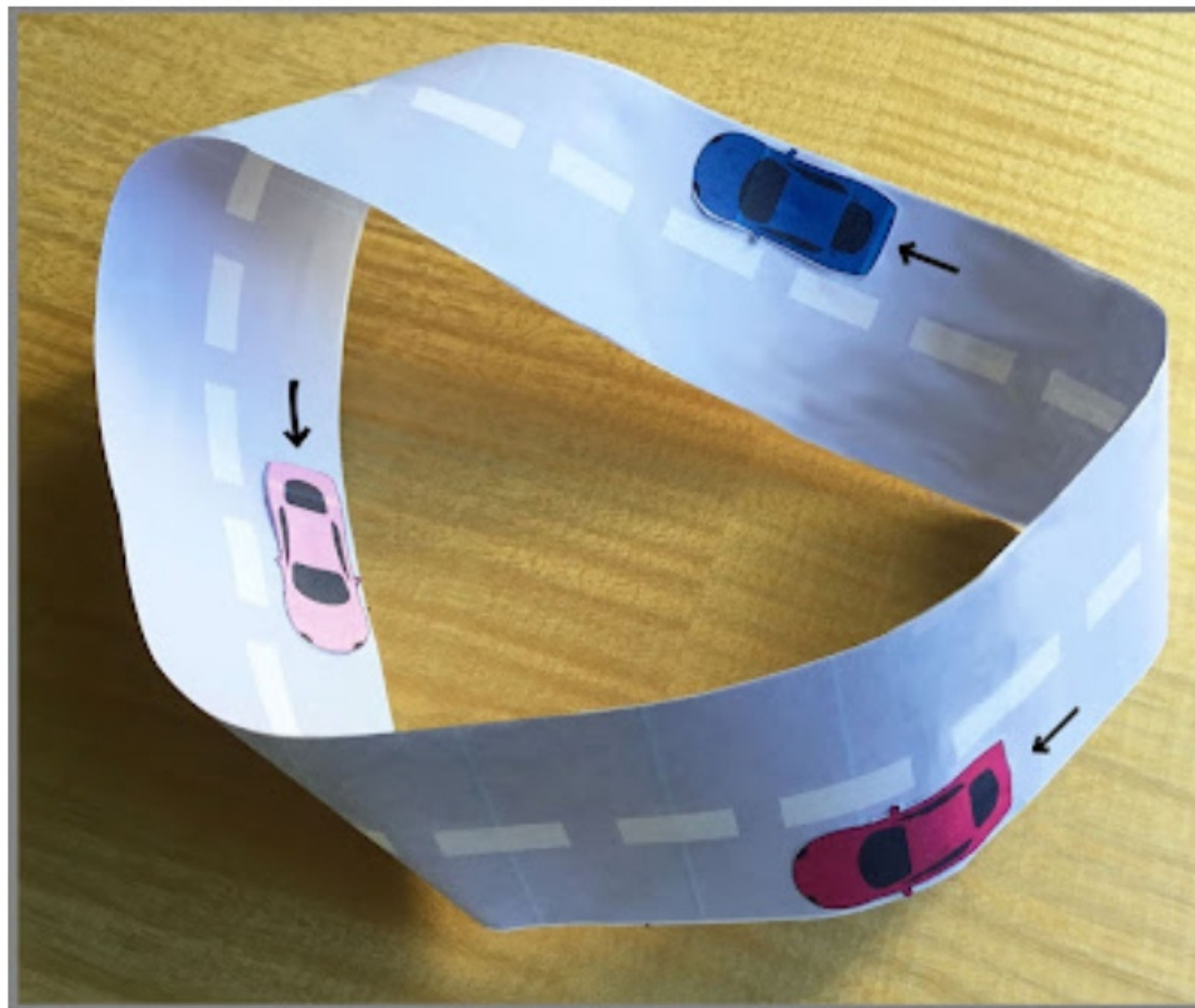


**Dyslexic strengths
include creativity and
visualization.**



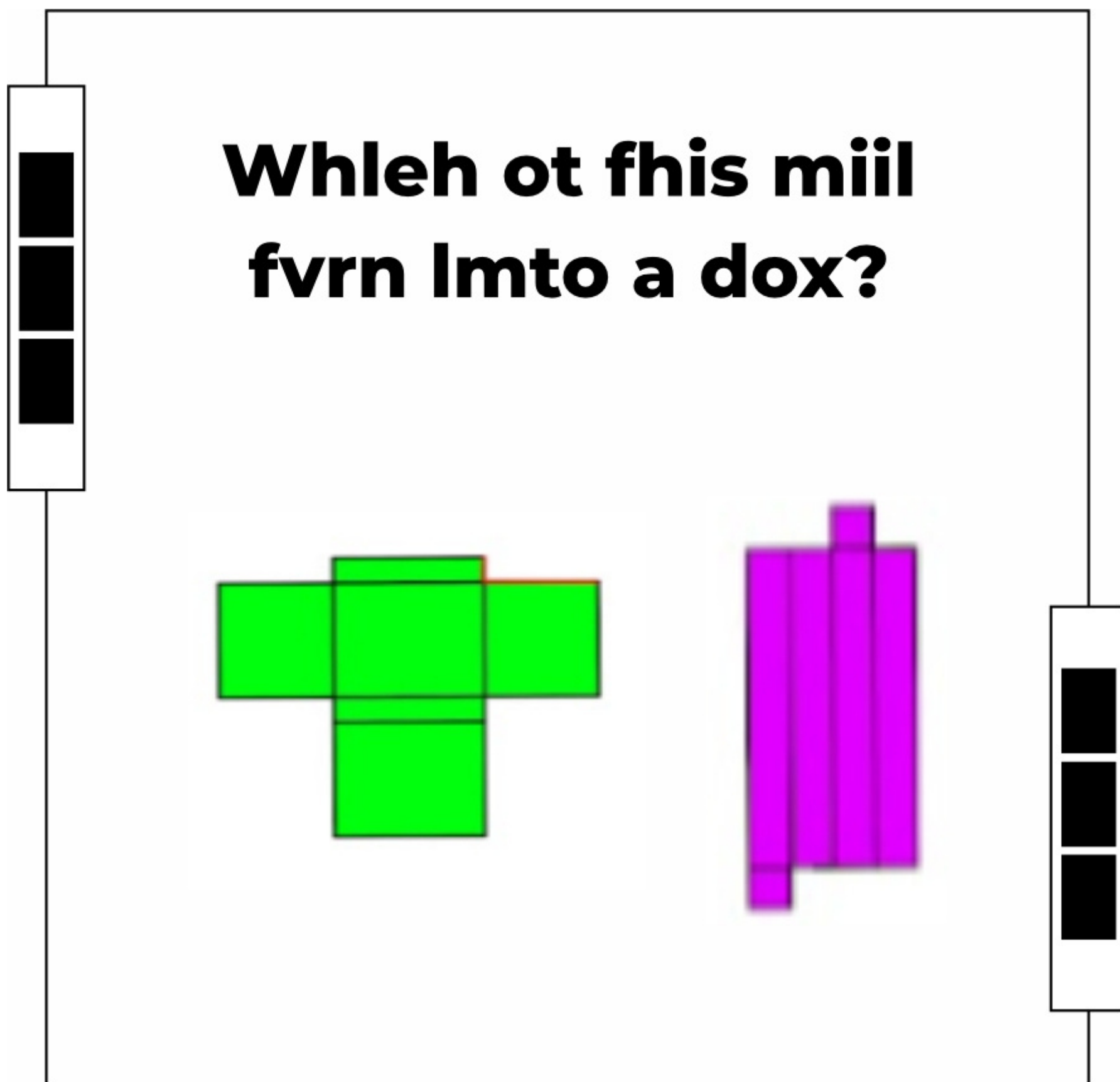
Spatial reasoning is one of the core strengths of dyslexic minds.

Wodius hl qhmav qrodicm



In fact, spatial reasoning is one of the core strengths of dyslexic minds, along with interconnected reasoning (ability to perceive patterns and examine a situation from multiple perspectives), pattern narrative reasoning (ability to view facts as experiences, examples or stories), and reasoning in dynamic settings, with incomplete or changing information.

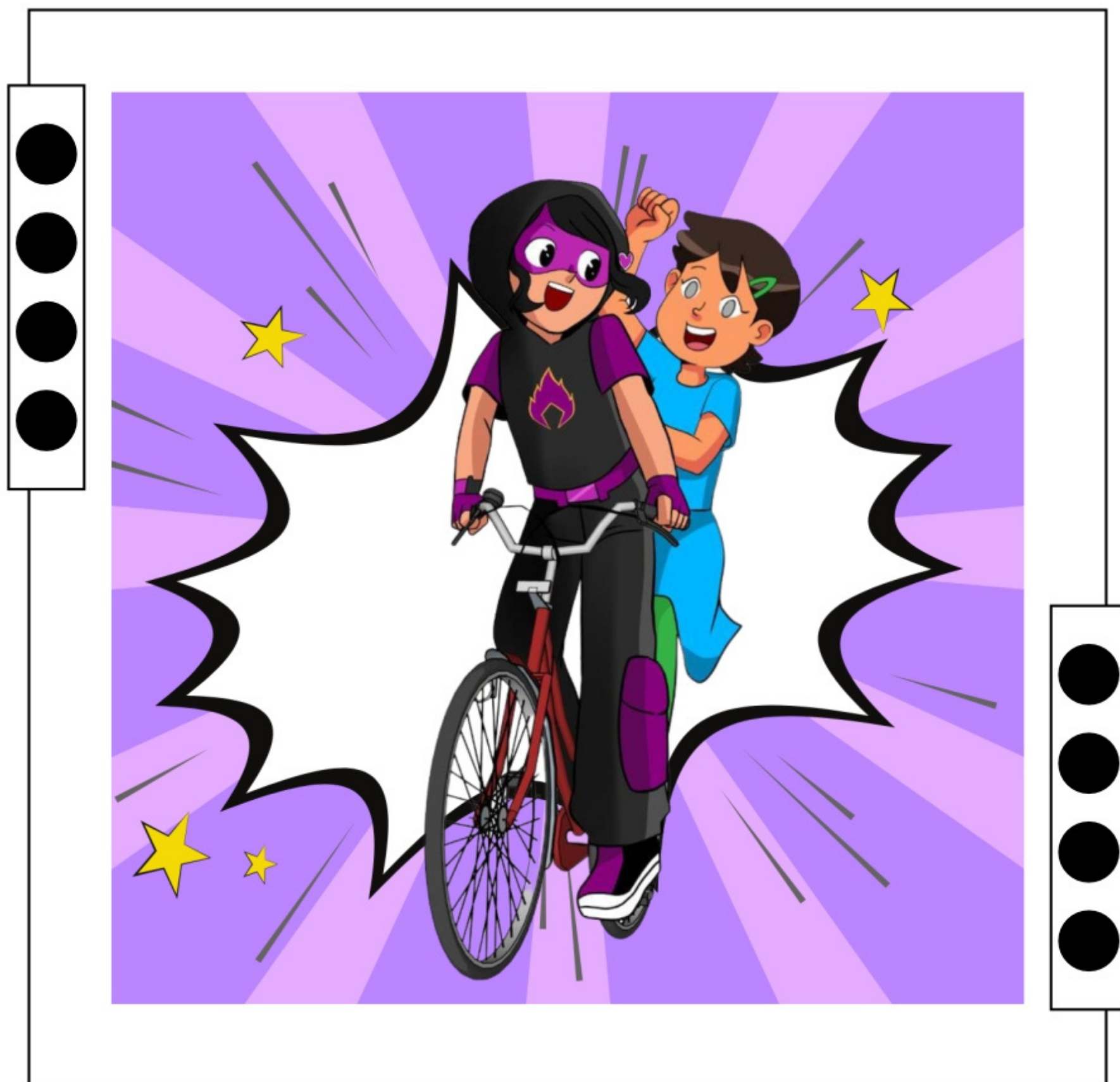
Dyslexic minds see in 3-D.



**#DyslexicThinking is
changinkk the world!**



Acceptance, support & inclusion is core for their success.



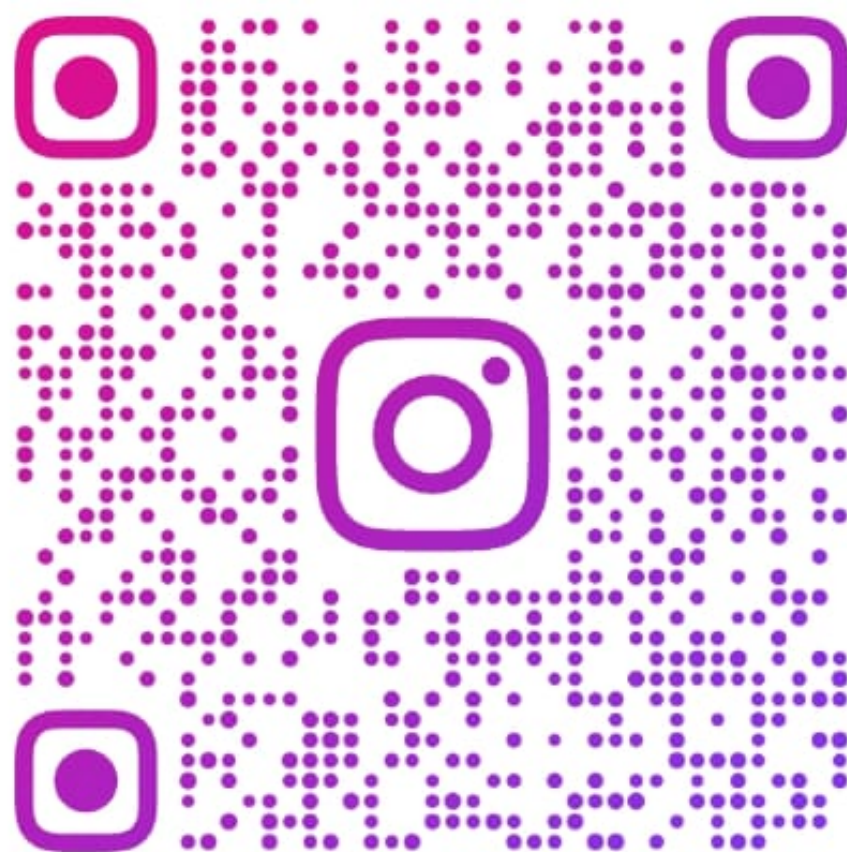




At ChangeInkk Foundation, we strongly believe that for India to become a \$10 trillion economy, contributions of individuals with Specific Learning Disabilities is a must. After all, 40% of the world's self-made millionaires have a learning disability, like Dyslexia, and #DyslexicThinking has powered most innovations that have changed our world!

We engage closely with individuals, parents, educators, employers, policy makers, and civil society, to mainstreaming inclusion in schools, higher education and workplaces, where individuals with SLDs can thrive.

Follow-us today!



@CHANGEINKK